

49,329 SF OF OFFICE SPACE
AVAILABLE FOR LEASE

7600 France Ave S
Edina, MN

7600
FRANCE



For More Information,
Contact:

STEVE SHEPHERD SIOR
Senior Managing Director
612-430-9973
steve.shepherd@nmrk.com

MATT ELDER CCIM, SIOR
Senior Managing Director
612-430-9974
matt.elder@nmrk.com

Property Highlights



On-site cafeteria
for tenants and
visitors



Multiple conference
and break out rooms



Ample on-site
parking



Located on the highly
desired France Ave
Corridor



On-site ownership
and professional
management



Monument signage
with France
visibility available



Full floor
opportunities
available



Newly remodeled
lobby entrance
with seating

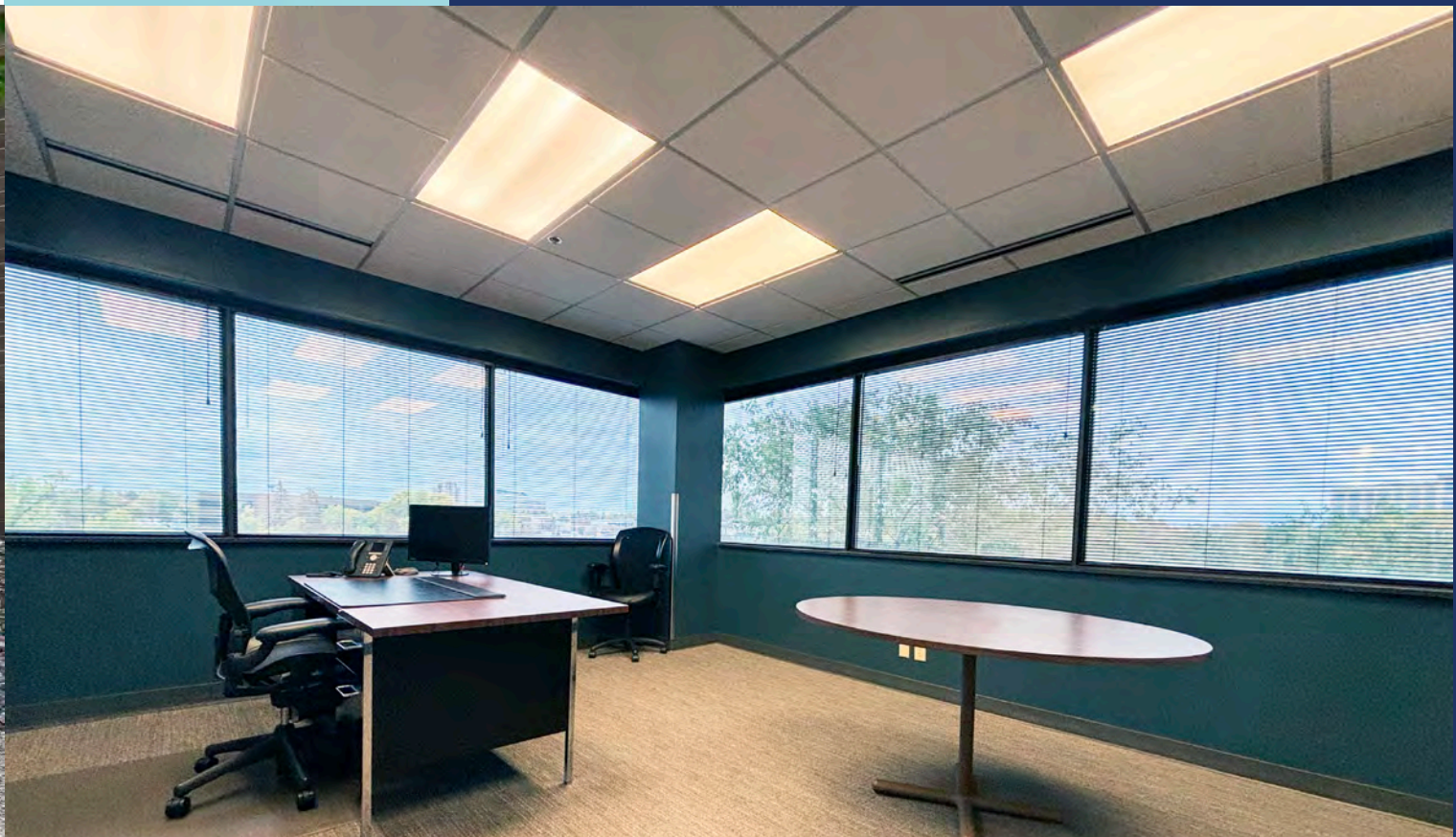
7600
FRANCE



Rent Rate:
\$15-\$18/sf

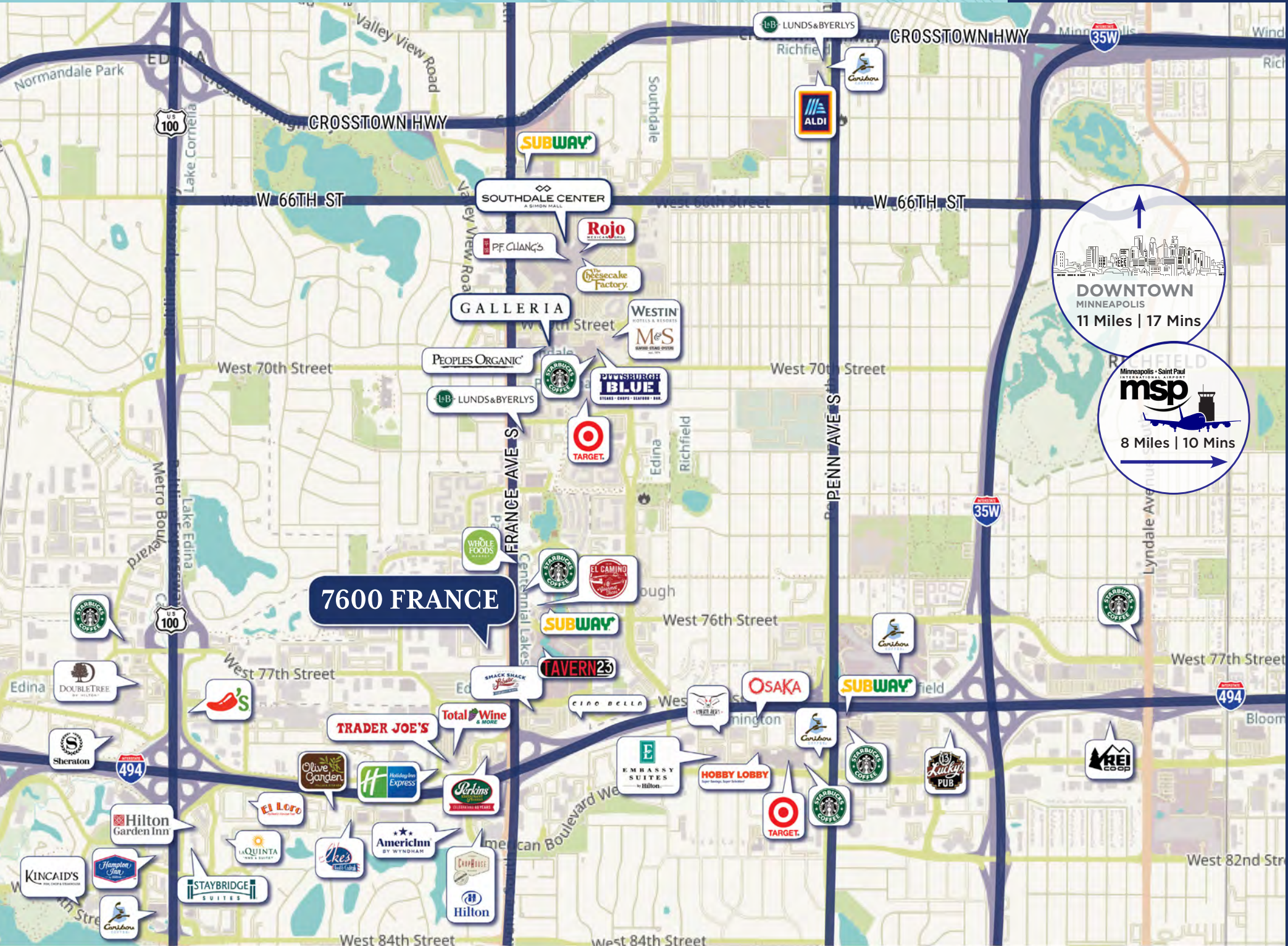


Tax/Op Expenses:
\$12.45/sf



7600 France offers exceptional amenities, designed to enhance the employee experience. Located near the intersection of Interstate 494 and France Avenue, 7600 France boasts high visibility and accessibility. Both tenants and their clients are thoroughly connected to nearby parks, shopping centers, dining, hotels and entertainment options.

7600
FRANCE

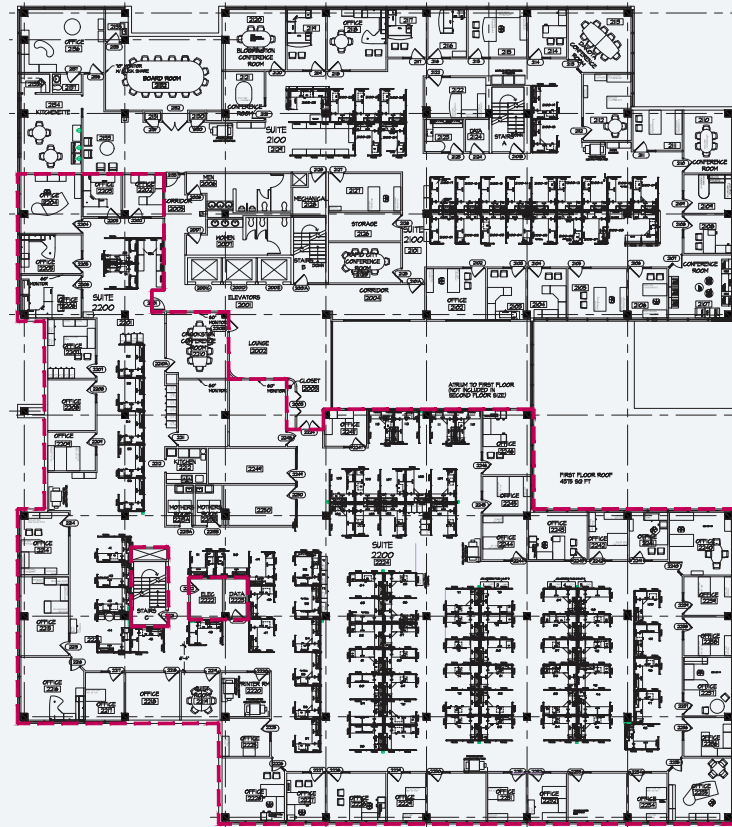


Floor Plans

SECOND FLOOR

Suite 200 - 20,845 SF

divisible to $\sim 4,000$ SF

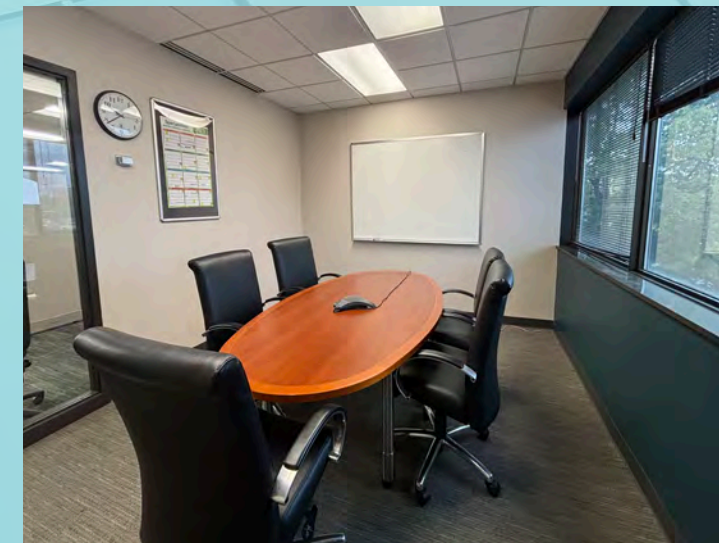
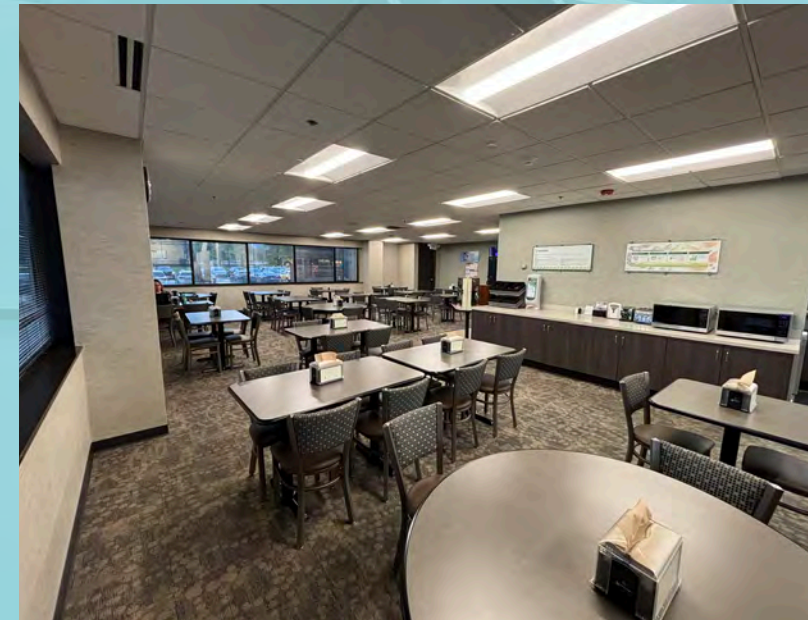
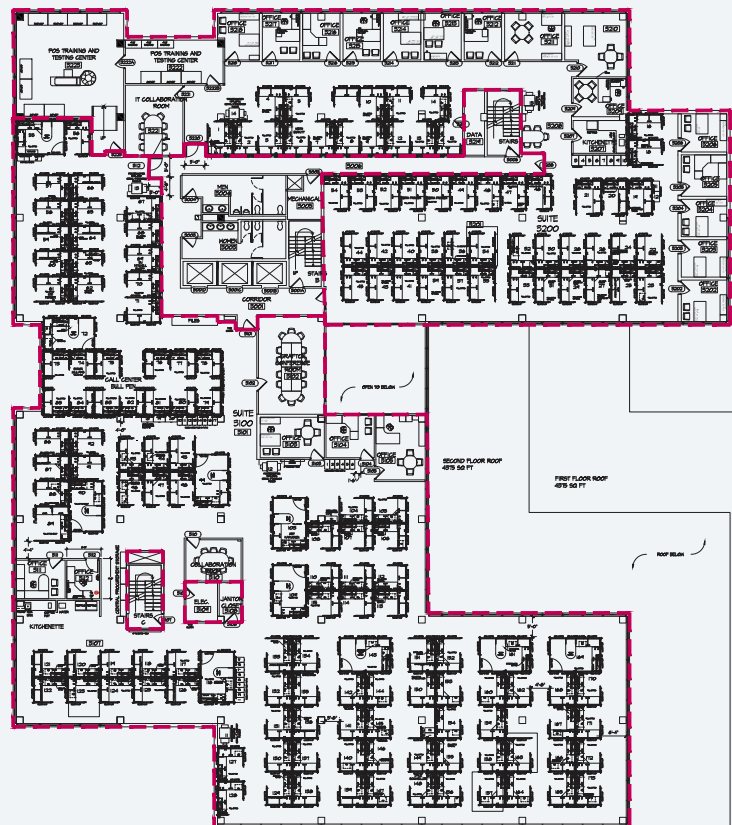


THIRD FLOOR

Suite 310 - 17,637 SF

Suite 320 - 10,847 SF

divisible to $\sim 4,000$ SF



7600 FRANCE

FOR MORE INFORMATION, CONTACT:

STEVE SHEPHERD SIOR
Senior Managing Director
612-430-9973
steve.shepherd@nmrk.com

MATT ELDER CCIM, SIOR
Senior Managing Director
612-430-9974
matt.elder@nmrk.com

Newmark | Minneapolis-St. Paul
100 South 5th Street #2100
Minneapolis, MN 55402
nmrk.com



NEWMARK

The information contained herein has been obtained from sources deemed reliable but has not been verified and no guarantee, warranty or representation, either express or implied, is made with respect to such information. Terms of sale or lease and availability are subject to change or withdrawal without notice.