

WAREHOUSE/FLEX SPACE FOR SALE

OWNER/USER OPPORTUNITY



6824 West Lake Street

NEWMARK

St. Louis Park, MN

Property Highlights



Building Size

6,300 SF



Year Built

1949



Easy Highway Access

Off Hwy 7 - Between Hwy 100 & 169



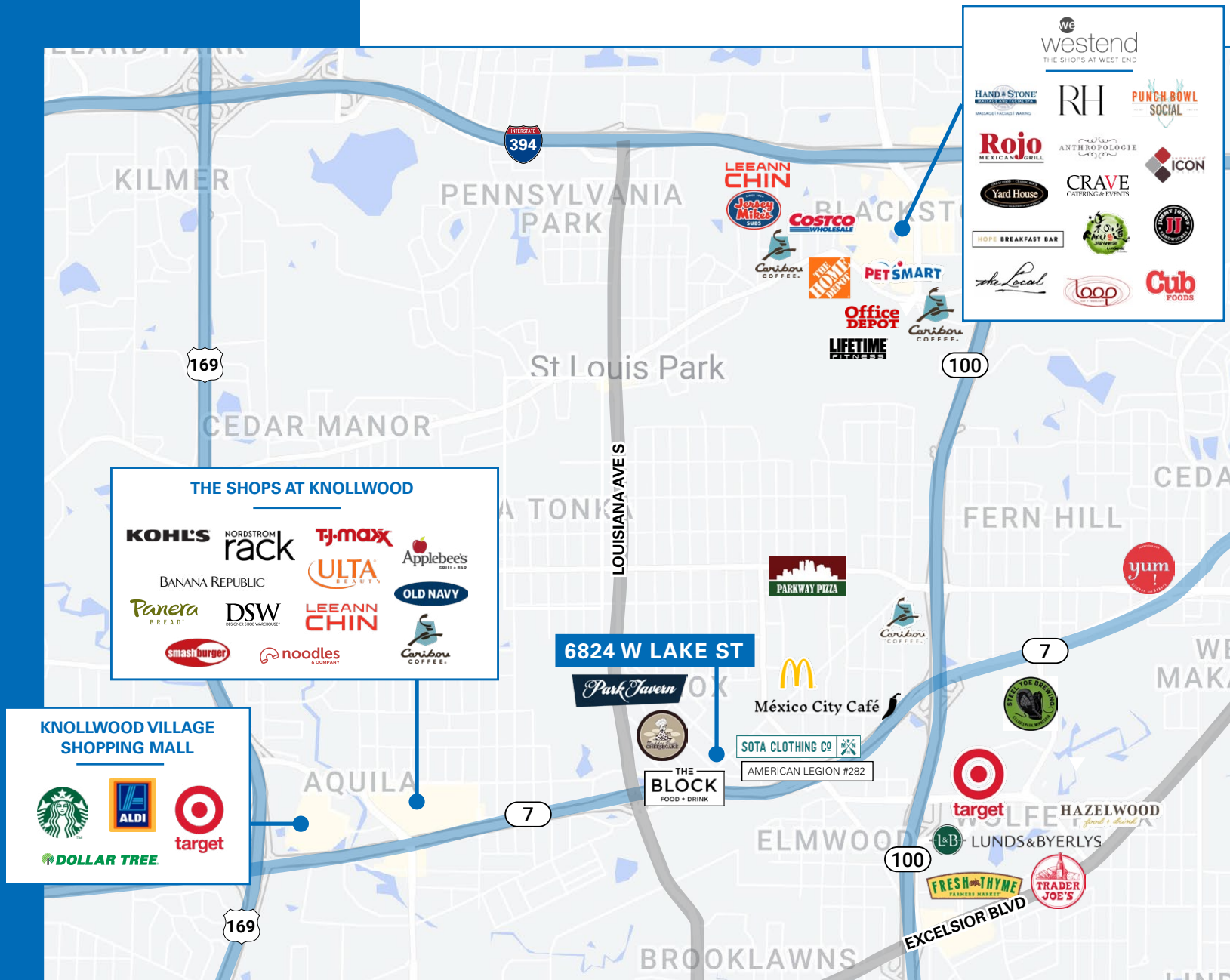
Sale Price

\$720,000

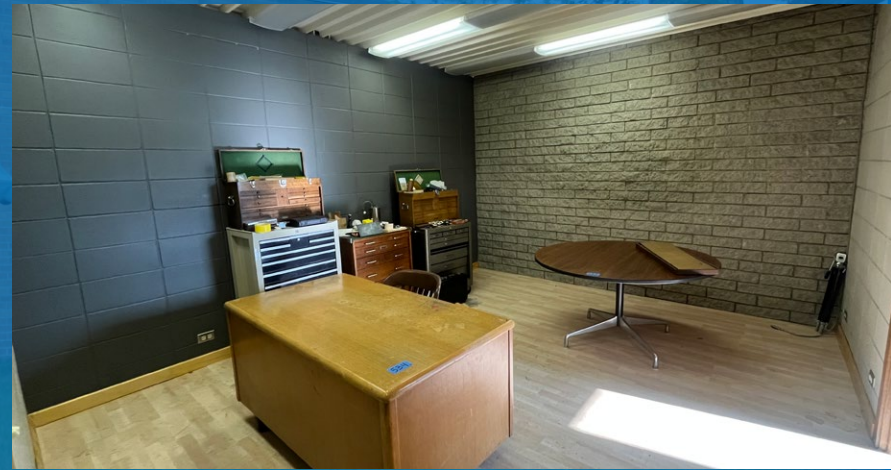
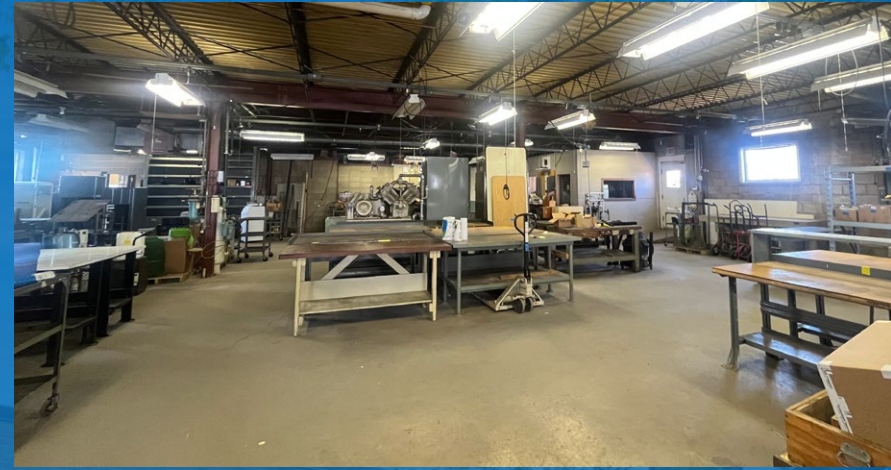


Area Amenities

- ▶ 1 MILE TO THE SHOPS AT KNOLLWOOD
- ▶ 3 MILES TO THE SHOPS AT WEST END
- ▶ 4 MILES TO UPTOWN
- ▶ 7 MILES TO DOWNTOWN MINNEAPOLIS
- ▶ 16.5 MILES TO MSP AIRPORT



6824 West Lake Street
St Louis Park, MN



For more information, contact:

Matt Elder CCIM, SIOR
Senior Managing Director
612-430-9974
matt.elder@nmrk.com

Steve Shepherd SIOR
Senior Managing Director
612-430-9973
steve.shepherd@nmrk.com

Amanda Ferlita
Associate
612-440-0007
amanda.ferlita@nmrk.com

100 S Fifth Street, Suite 2100
Minneapolis, MN 55402

nmrk.com

NEWMARK

The information contained herein has been obtained from sources deemed reliable but has not been verified and no guarantee, warranty or representation, either express or implied, is made with respect to such information. Terms of sale or lease and availability are subject to change or withdrawal without notice.